

40 million Japanese horses celebrated at Mitsui

On 3 July 2002 Mitsui Engineering & Shipbuilding Co. Ltd. in Tamano, Japan, hosted an unusual event. On this day Mitsui gathered employees and guests from sub-suppliers and subcontractors as well as MAN B&W Diesel A/S to celebrate Mitsui's 40 million bhp of MAN B&W two-stroke engine power. The engine marking the 40 million bhp is a 6S70MC for NKK Shipyard who was also present at the celebration.



On the picture is seen from left to right:

Mr M. Ohtsu, Mitsui

Mr Y. Miki, MAN B&W

Mr O. Pedersen, MAN B&W

Mr K. Ohno, Mitsui

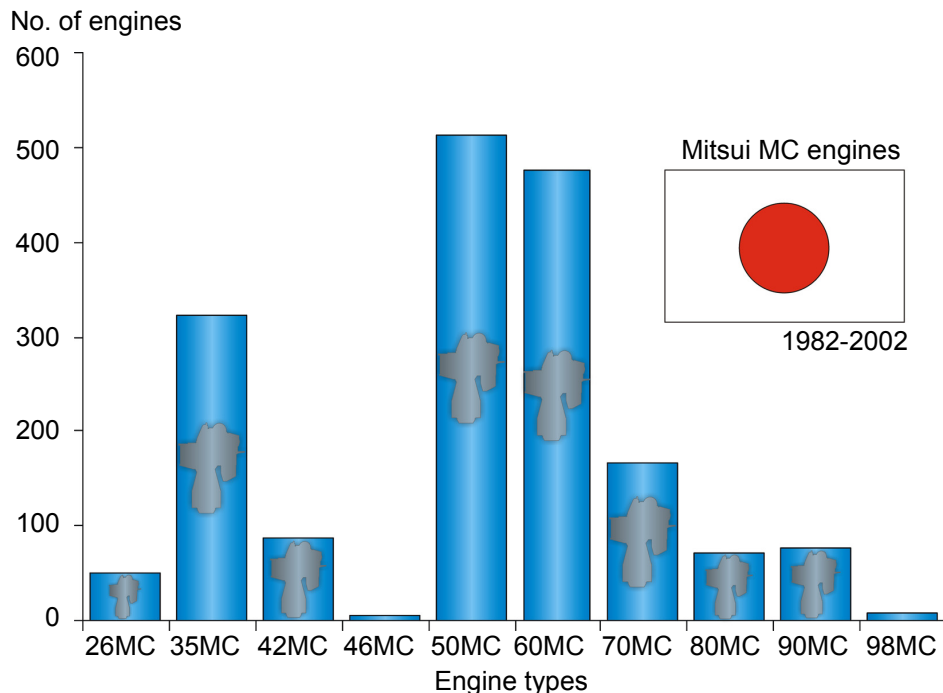
Mr P. Sunn Pedersen, MAN B&W

Mr T. Washida, Mitsui

Mr O. Grøne, MAN B&W

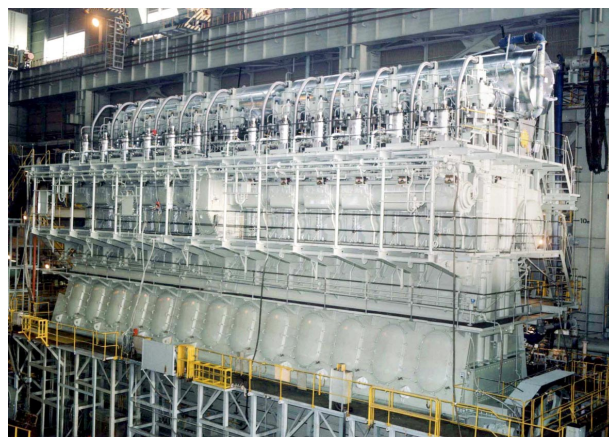
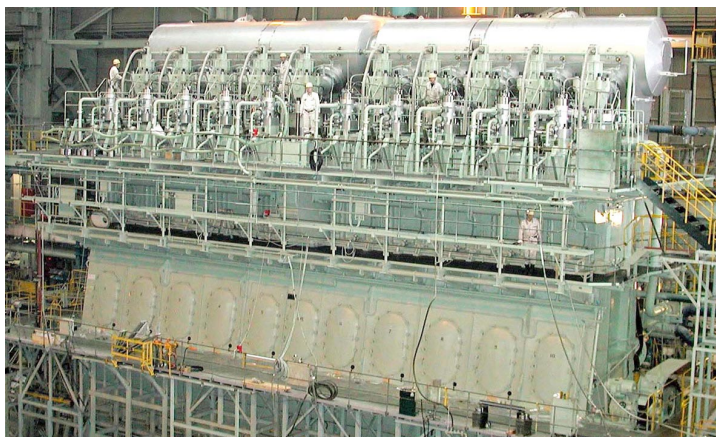
Mr G. Morita, Mitsui

Mitsui has held a licence to build B&W engines since 1926 and is, thus, the oldest of MAN B&W Diesel's present licensees. Mitsui exclusively builds two-stroke engines under the licence with MAN B&W Diesel.



Statistics showing the number of MC engines built by Mitsui.

In 1982 Mitsui was the first in the world to total 15 million bhp in diesel engine production. Since then – in only 20 years – they have completed around 1,800 engines, totalling 25 million bhp, and now they are the first ever to reach 40 million bhp.



Two of Mitsui's large MAN B&W Diesel engines: A 10K98MC (left) and a 12K90MC.

If you have any queries please contact:
 MAN B&W Diesel A/S, PR & Documentation Dept.
 Peter Dan Petersen
 Tegholmegade 41
 Tel.: 33 85 14 70
 Fax: 33 85 10 30
 E-mail: pdp@manbw.dk